



DIVERSIFIED STORAGE SYSTEMS

(888) SILO-SYS (888) 745-6797

## ***SuperSack Trans Pod*** **Operating Manual**



### Silo Specifications

Weight (empty)	6400 Lbs.
Hopper Size	150 Cubic Feet
Hopper Capacity	12,000 Lbs. (4 tons)
Dimensions	9'-4"H X 7'-6"W X 12' L
Rate of Discharge	1200 lbs a min. (cement)
Discharge Type	Pneumatic 5" line

### Silo Description

**SupersaX** Trans Pod system is a portable self-contained hopper designed to transfer dry bulk products to be used on job sites or in plant applications. The design has many features that make the **SupersaX** Trans Pod hopper system a must have in applications when transferring from supersacks to bulk storage. The silo can store up to 12,000 Lbs. of bulk product to be pneumatically transferred out using our 14" vane feeder with transition tube. The hopper is equipped with a fan drawn dust collector for dust free operation. Fork pockets allow for ease of transport. Filling the silo is done by using a forklift to lift the product over hopper and lowered onto the knife plate inside. The hopper has a ladder to allow operator safe access to the top of the silo to assist with bag unloading.



46 Pioneer Parkway Ph # 903-919-0600  
Sulphur Springs, TX Fax # 903-919-0601

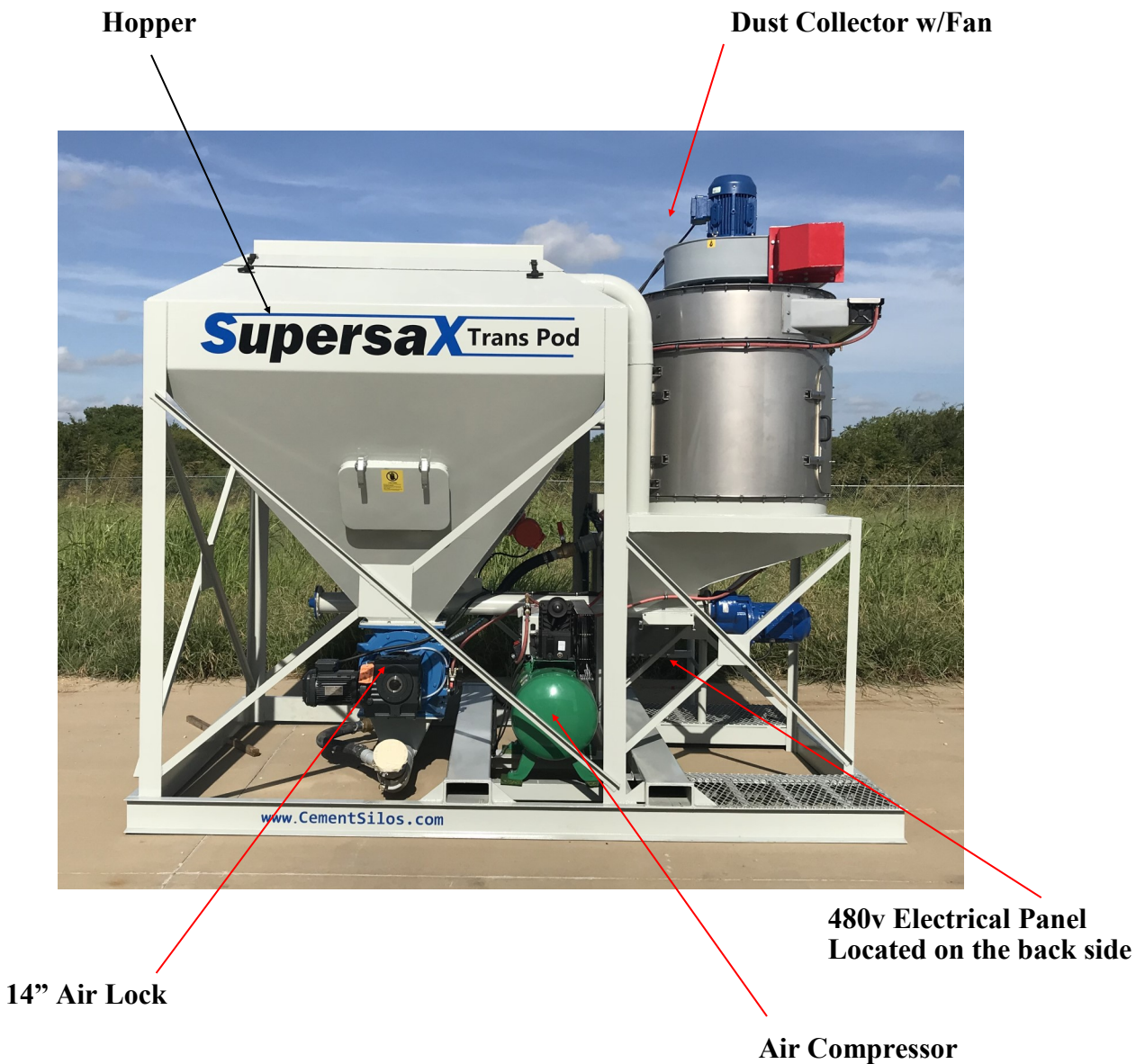
[www.CementSilos.com](http://www.CementSilos.com)



DIVERSIFIED STORAGE SYSTEMS  
(888) SILO-SYS (888) 745-6797

## ***SuperSack Trans Pod Operating Manual***

### Layout



46 Pioneer Parkway Ph # 903-919-0600  
Sulphur Springs, TX Fax # 903-919-0601

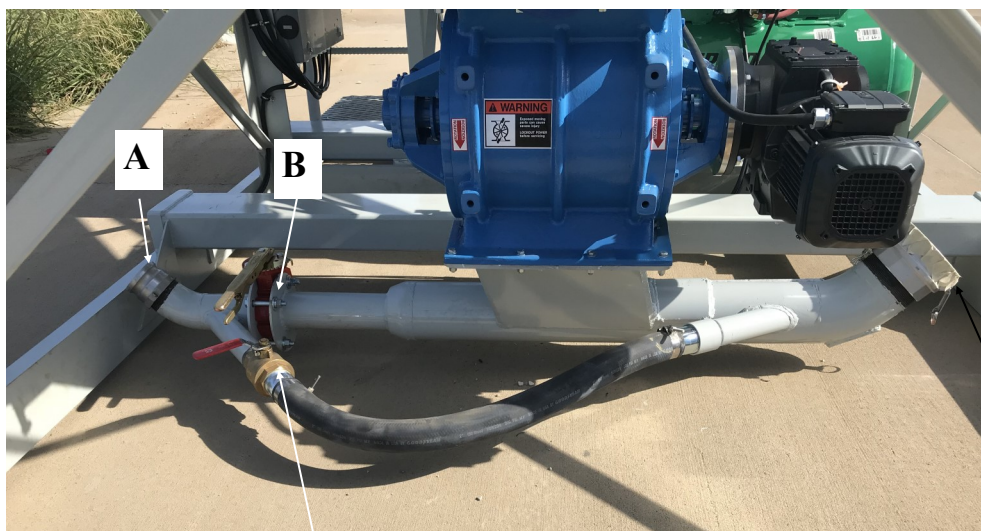
[www.CementSilos.com](http://www.CementSilos.com)



DIVERSIFIED STORAGE SYSTEMS  
(888) SILO-SYS (888) 745-6797

## ***SuperSack Trans Pod Operating Manual***

### Operating Continued



C

Hook the 5" discharge line to this camlock

- A. 3" male camlock: Blower input.
- B. 3" Butterfly valve: air flow control valve.
- C. 1 1/2" Ball Valve: Chase air control valve.

1. Attached 3" hot hose from blower to 3" male camlock.
2. Adjust 3" Butterfly valve to achieve right balance of air to product. Too much air will slow down the delivery time and too little air will plug the line.
3. Use the 1 1/2" ball valve (chase air) to help move the product through the transfer line.

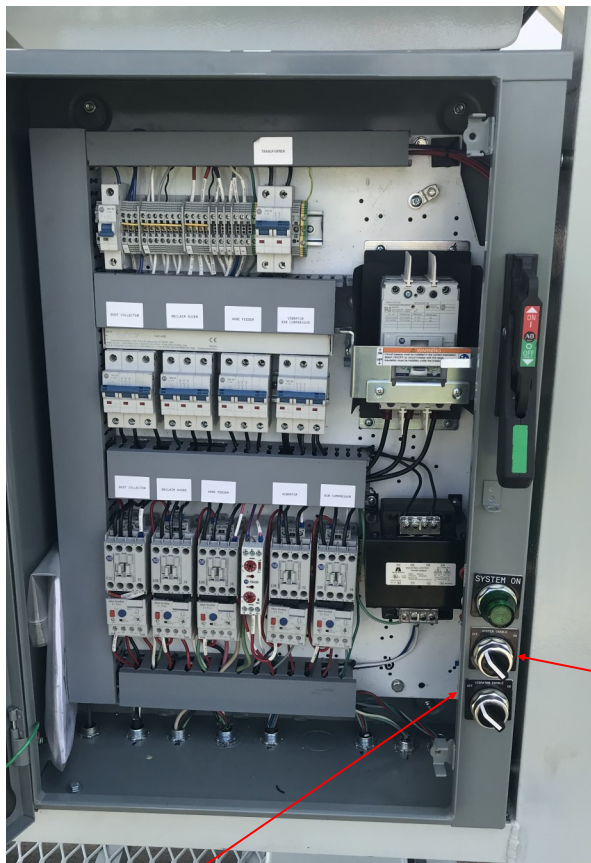


DIVERSIFIED STORAGE SYSTEMS

(888) SILO-SYS (888) 745-6797

## ***SuperSack Trans Pod Operating Manual***

### Operating Continued



#### Operating Instructions:

First the electrical panel needs to be energized, 480v/3ph/60hz 50amp.  
(must confirm rotation of air lock & Auger)

This system also requires a hi volume lo pressure air source minimum requirement 460cfm at 10psi. *(not Supplied)*

The Super Sack Trans Pod has three main components. The 14" vane feeder, 4" Auger and the dust collector with fan.

1. **Turn Your Blower ON**
2. Turn system **ON** (one switch turns the vane feeder, dust collector and auger return on)
3. The system is ready to start loading bags into it.
4. With a fork lift or similar, lower the super sacks into the hopper, the knife plate will cut the bags, then raise bag hold over hopper and verify it is empty. (see Next Page)

**\*\*The hopper is equipped with a vibrator, it will only turn on if the vane feeder is running.**

**\*\*DO NOT TURN IT ON ALL THE TIME, IT IS ONLY NEEDED AT THE VERY END TO COMPLETELY EMPTY THE HOPPER\*\*\*\***

Operating Continued



Operating Instructions: Lower the bag into the hopper, there is a knifeblade that will cut the bags and you can then slowly raise the bag and repeat.

If you do not wish to ruin the bags there is a work platform on the back side, you can have a person untie the bottom spout and drain the bag into the hopper.



DIVERSIFIED STORAGE SYSTEMS

(888) SILO-SYS (888) 745-6797

## ***SuperSack Trans Pod Operating Manual***

### Dust Collector Maintenance



The WAM 400 Pulse jet dust collector runs all the time during operation. The pulse jet timing is preset and will need no adjusting in the field.

#### *Maintenance:*

Weekly: Open up the grain valve on the air tank to release any excess water.

Monthly : Open inspection door to do a visual inspection of the filters. Make sure there is no excessive build up of material on the filters.

Changing of filters: The filters inside this unit should last 24 months of heavy use. If a filter is damaged or they are worn out they should be replaced.

To replace open access door, grasp filter and turn clockwise to remove.

To install place filter into slot and turn counter clockwise to tighten.



46 Pioneer Parkway Ph # 903-919-0600  
Sulphur Springs, TX Fax # 903-919-0601

[www.CementSilos.com](http://www.CementSilos.com)



DIVERSIFIED STORAGE SYSTEMS

(888) SILO-SYS (888) 745-6797

## ***SuperSack Trans Pod Operating Manual***

### Dust Collector Operation



The hopper under the dust collector is equipped with an air fluidizer. This will help the powder flow into the return auger.

You only need to run it as needed.

The control valve for the fluidizer is located on the black manifold at the air compressor.



46 Pioneer Parkway Ph # 903-919-0600  
Sulphur Springs, TX Fax # 903-919-0601

[www.CementSilos.com](http://www.CementSilos.com)



DIVERSIFIED STORAGE SYSTEMS

(888) SILO-SYS (888) 745-6797

## ***SuperSack Trans Pod Operating Manual***

### Transpod Maintenance

#### Maintenance Schedule for the Transpod:

##### Dust Collector Filter:

Visual once a month

18-24 month replacement

##### Rotary Air Lock:

Visual Inspection every 1000 tons of throughput.

Check clearance of vanes, should be .004" -.007"

##### Rotary feeder gearbox:

Check oil level weekly.

Change oil every 10,000/hrs or two years

If using a synthetic every 20,000/hrs or four years.

##### Auger gearbox:

Oil Level should be checked weekly

First oil change 1000 hours

Every 2500/hrs after that

##### Auger:

Grease end bearing weekly with a bearing grease heavy duty

Motors all as applicable once a year grease the fan bearing with a electrical compatible oil (one pump only)